



Members Meeting

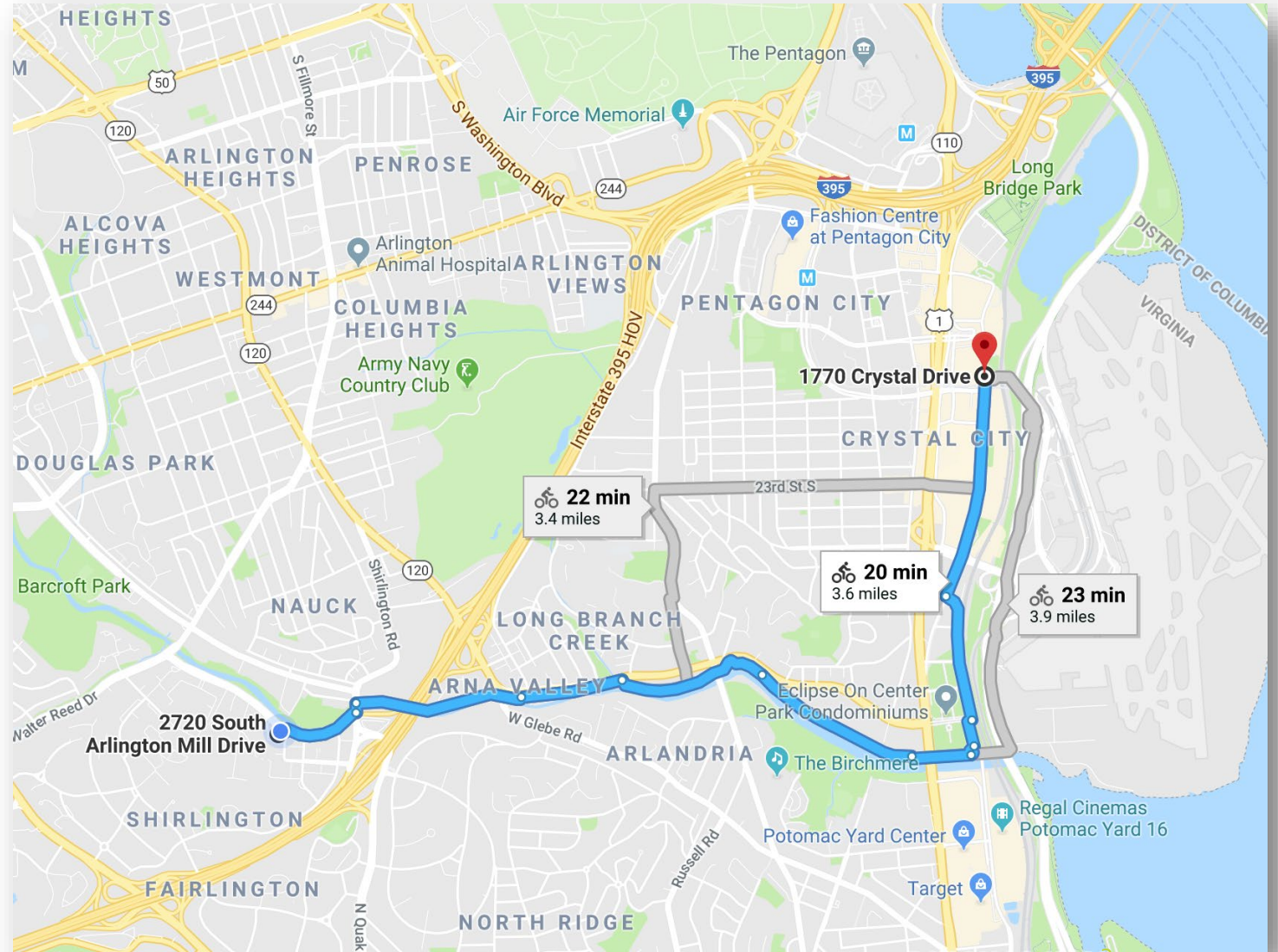
November 13, 2018

Agenda

- Welcome and Introductions (5 min)
- Officers' Report (10 min)
- **VDOT – I-395 Shirlington Interchange Study** (15 min)
 - Questions and Discussion (15 min)
- **Updates** (30 min)
 - Proposed Federal Realty project
 - Campbell (Harris Teeter) Garage maintenance
 - Pedestrian safety – S Arlington Mill Drive
 - E-Scooters in the Village
- **SCA Elections** (10 min)
- Adjourn (8:30 pm)

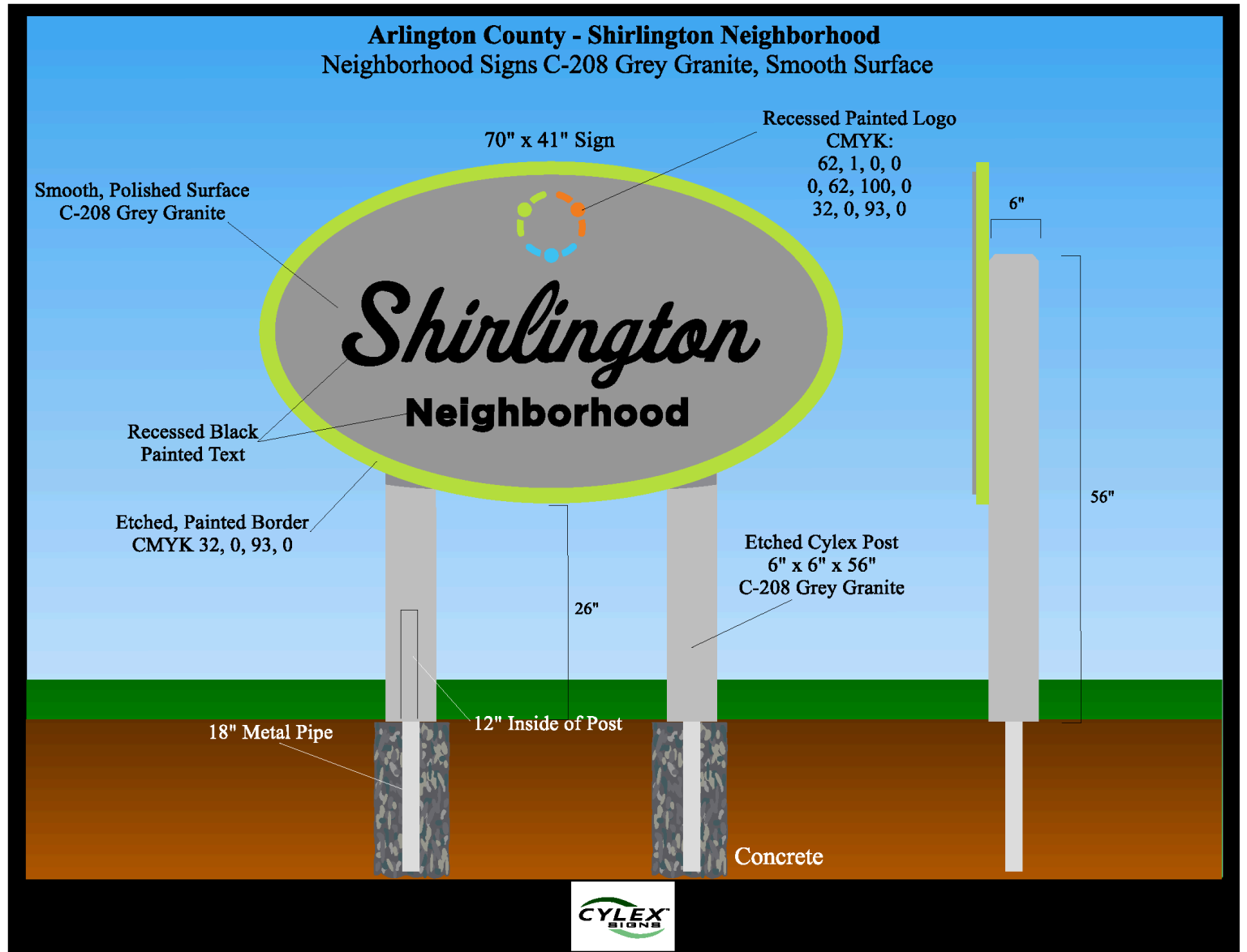
Shirlington to Amazon HQ2 = 25 min by bike!

Amazon will locate in “National Landing,” the newly branded neighborhood that includes Crystal City, the eastern portion of Pentagon City, and the northern portion of Potomac Yard.



Officers' Report

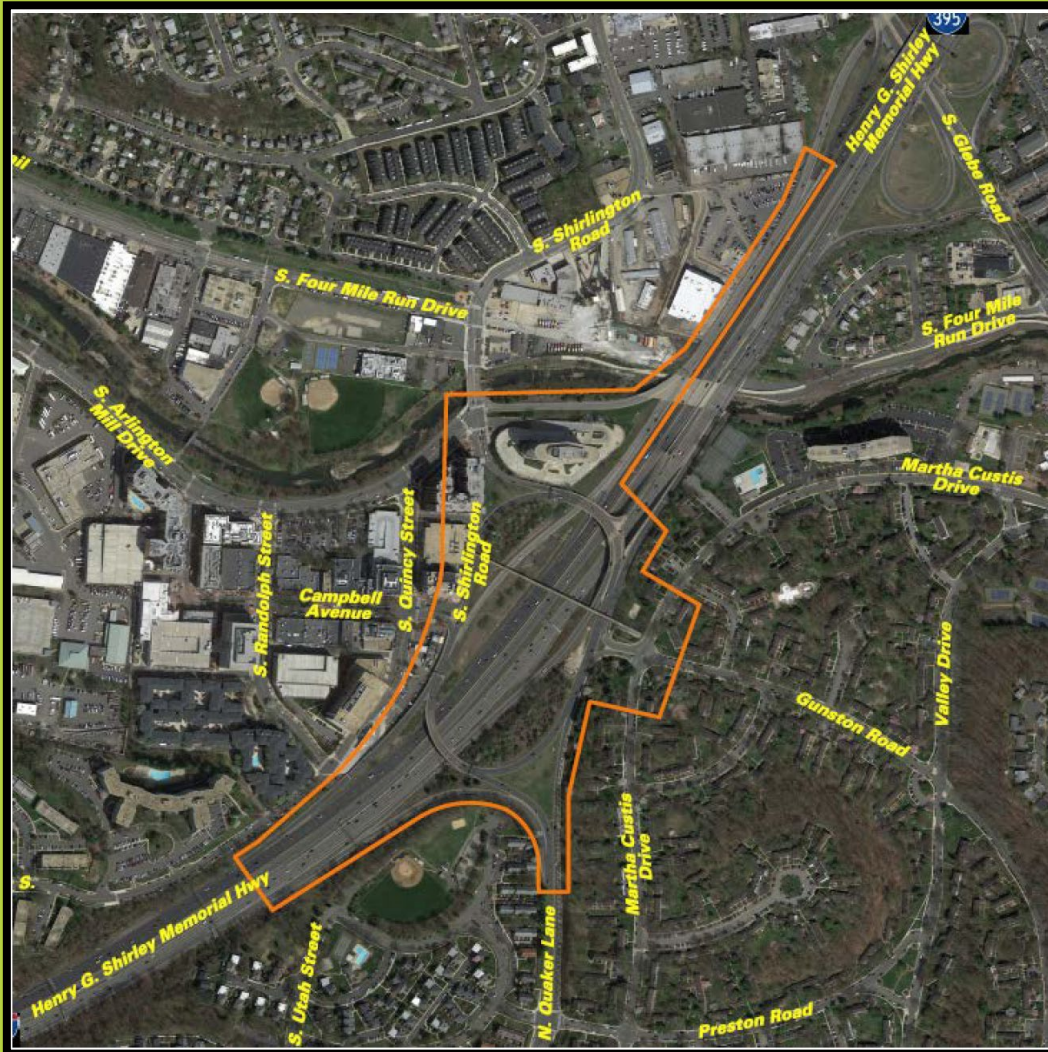
- Shirlington Neighborhood signs arriving in spring
- Membership appeals going out now



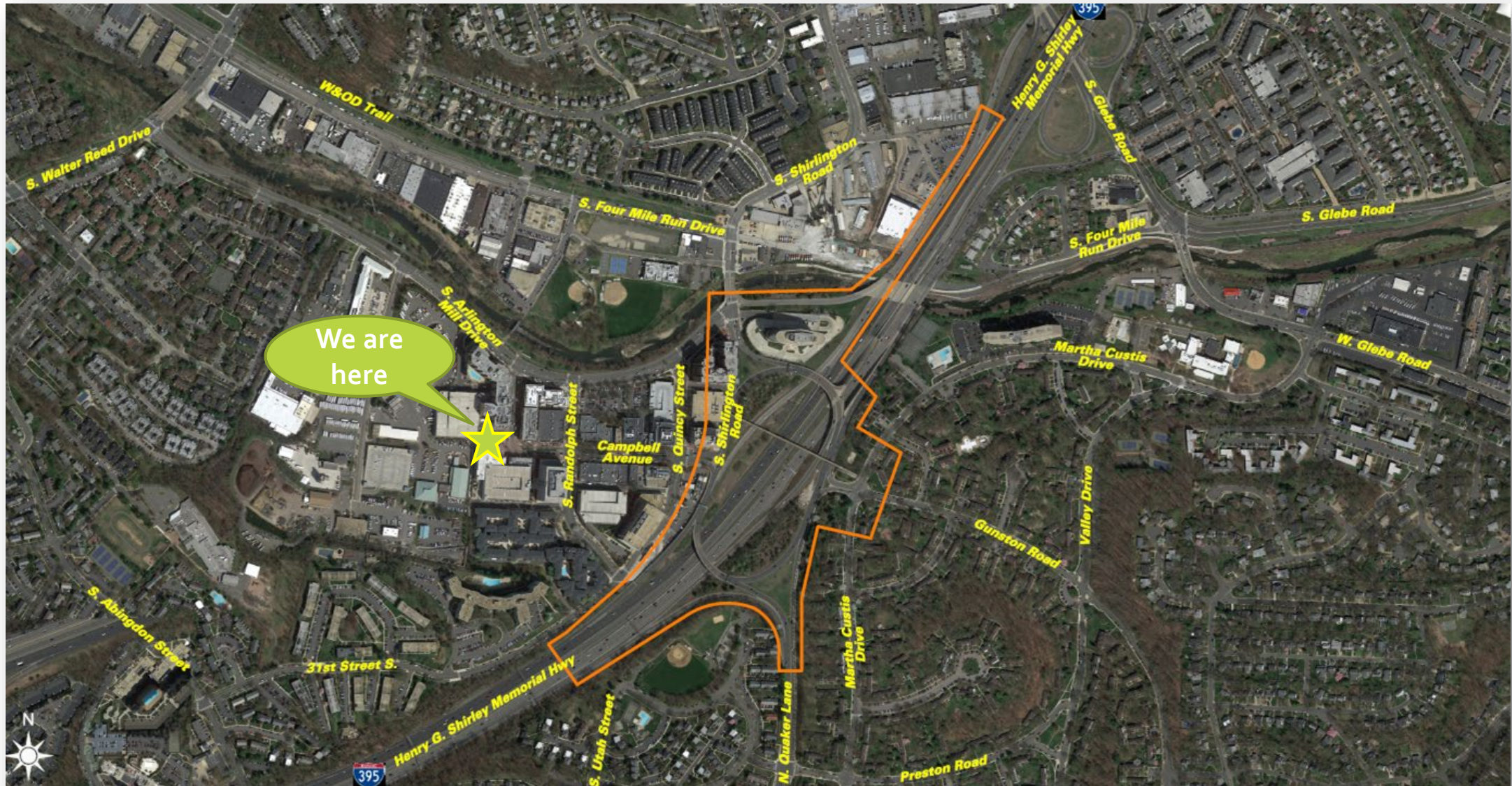
I-395 Shirlington Interchange Improvements Study

Olivia Daniszewski, EIT

Virginia Department of Transportation



Study Area: Shirlington Interchange to Glebe Road



I-395 SHIRLINGTON ROAD INTERCHANGE IMPROVEMENTS STUDY

HOA Briefing

 Olivia Daniszewski, EIT

November 13th, 2018

Study Limits

- The I-395 Shirlington interchange
- The ramp from Glebe Road (Route 120) to southbound I-395
- The intersection of Shirlington Rd and Arlington Mill Dr
- The intersection of Gunston Road and Martha Custis Drive



Study Purpose & Goal

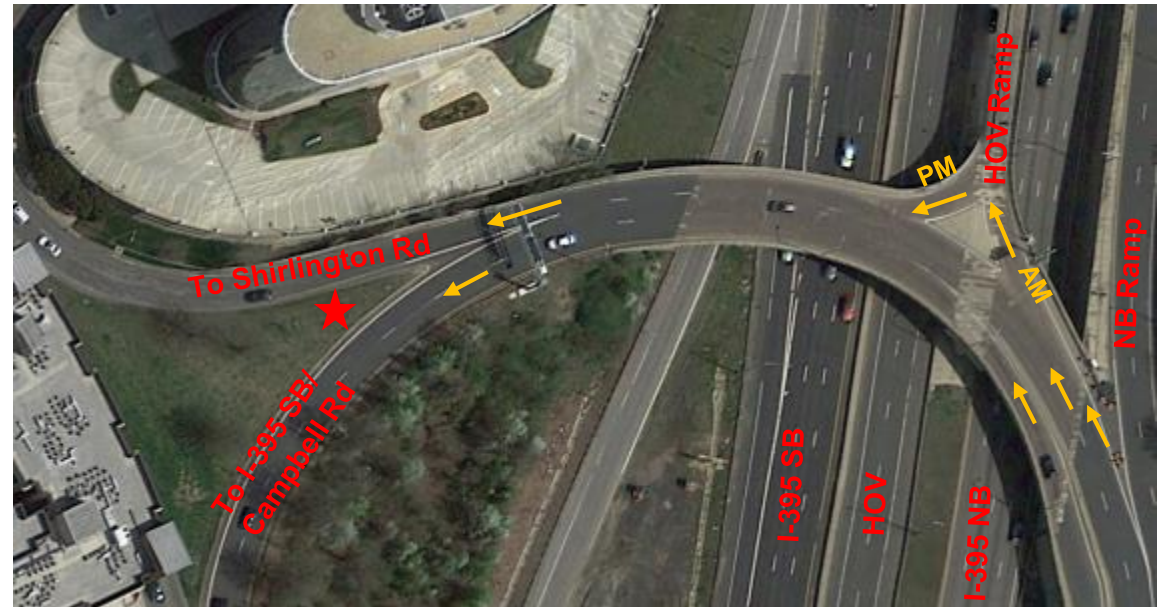
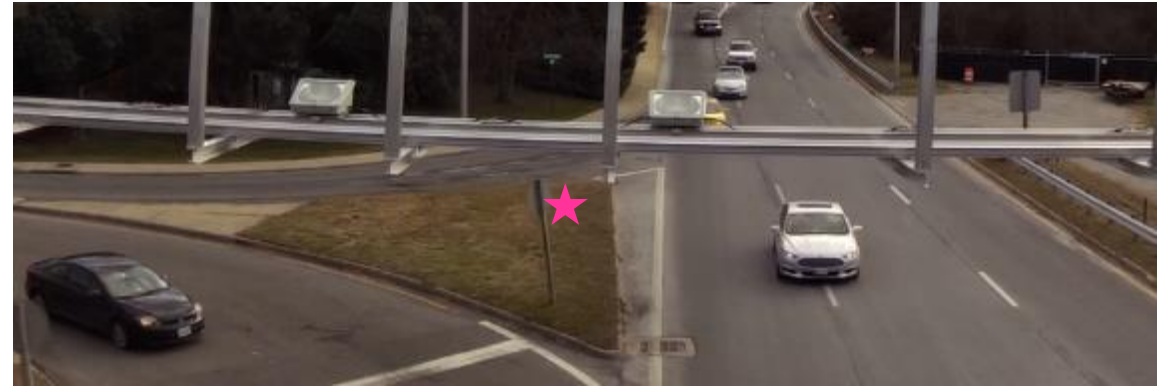
- Identify safety & operational issues
- Develop recommendations for the operations & safety improvements
- Address residents' concerns & incorporate feedback

Your input is important to this study.



Study Status

- Collected data, identified safety and operational issues
- Identified potential improvements and solicited feedback from our local government partners
- Detailed analysis and conceptual plans of the alternatives:
 - 6 alternatives focus on Shirlington Road rotary (S - #)
 - 2 alternatives focus on Glebe Road ramp (G - #)



Alternative S-1: Reduce & Repurpose Existing Lanes



Existing Conditions:

- Mix of high and low speed entrances to the rotary (areas shown in red)
- Several multi-lane weave movements

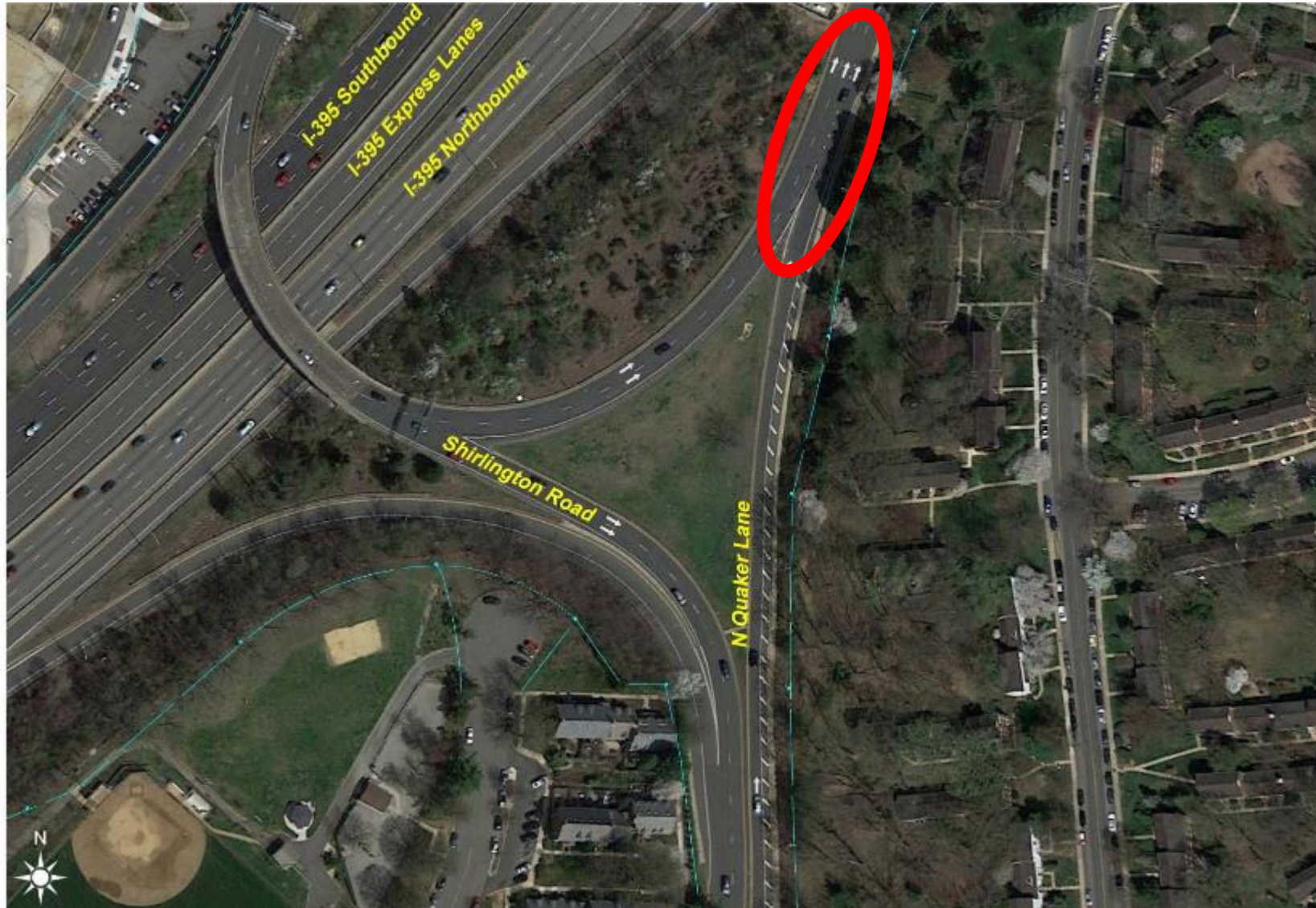
Alternative S-1: Reduce & Repurpose Existing Lanes



Proposed Alternative:

- Repurpose existing lanes and eliminate low-volume lanes to reduce weave movements

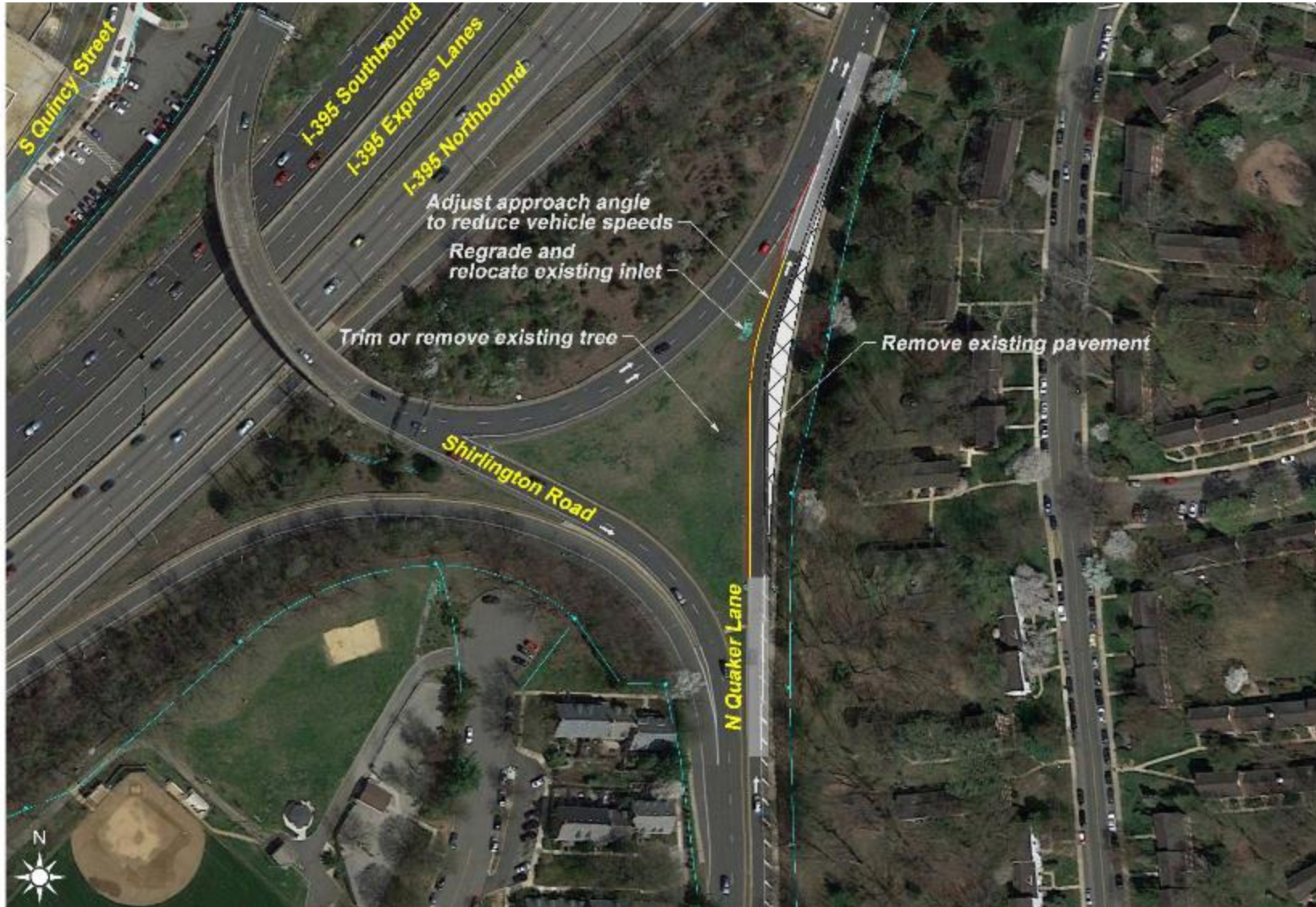
Alternative S-2: Realign Quaker Lane Ramp



Existing Conditions:

- Several key movements in area:
 - Rotary traffic merges to the right to Gunston Road or I-395 NB
 - Quaker Lane merges into the rotary
- High speeds of traffic entering interchange from Quaker Lane (area shown in red)
- **Crash Hot Spot**

Alternative S-2: Realign Quaker Lane Ramp



Proposed Alternative:

- Realign and adjust the approach angle of Quaker Lane ramp to reduce speeds of traffic entering the interchange

Alternative S-3: Add Lane to Arlington Mill Drive Exit



Existing Conditions:

- Several decision points and weaving movements over a short distance:
- Both Express Lanes exit and I-395 NB off-ramp traffic entering rotary
- Rotary traffic to Arlington Mill Drive, Campbell Avenue or I-395 SB
- Limited advanced signing and sight distance
- High speeds of traffic (area shown in red)

Alternative S-3: Add Lane to Arlington Mill Drive Exit



Proposed Alternative:

- Add a lane to Arlington Mill Drive exit to reduce number of weaving movements

Alternative S-4: Create Signalized T-Intersection with Rotary & Quaker Lane



Existing Conditions:

- Several key movements in area:
 - Rotary traffic merges to the right to Gunston Road or I-395 NB
 - Quaker Lane merges into the rotary
- High speeds of traffic entering interchange from Quaker Lane (area shown in red)
- **Crash Hot Spot**

Alternative S-4: Create Signalized T-Intersection with Rotary & Quaker Lane



Proposed Alternative:

- Create signalized T-intersection with rotary and Quaker Lane to:
 - Eliminate weave from rotary to Gunston Road
 - Control Quaker Lane traffic speeds

Alternative S-5: Create Signalized Intersection with I-395 NB Off-Ramp & Gunston Rd



Existing Conditions:

- I-395 NB Off-Ramp exits to area with several weaves over a short distance
- Quaker Lane merges into the rotary where rotary traffic weaves to the right to Gunston Road or I-395 NB
- High speeds of traffic entering interchange from Quaker Lane (area shown in red)

Alternative S-5: Create Signalized Intersection with I-395 NB Off-Ramp & Gunston Rd



Proposed Alternative:

- Convert I-395 NB off-ramp to an intersection with Gunston Road to:
 - Control speeds
 - Remove weaves

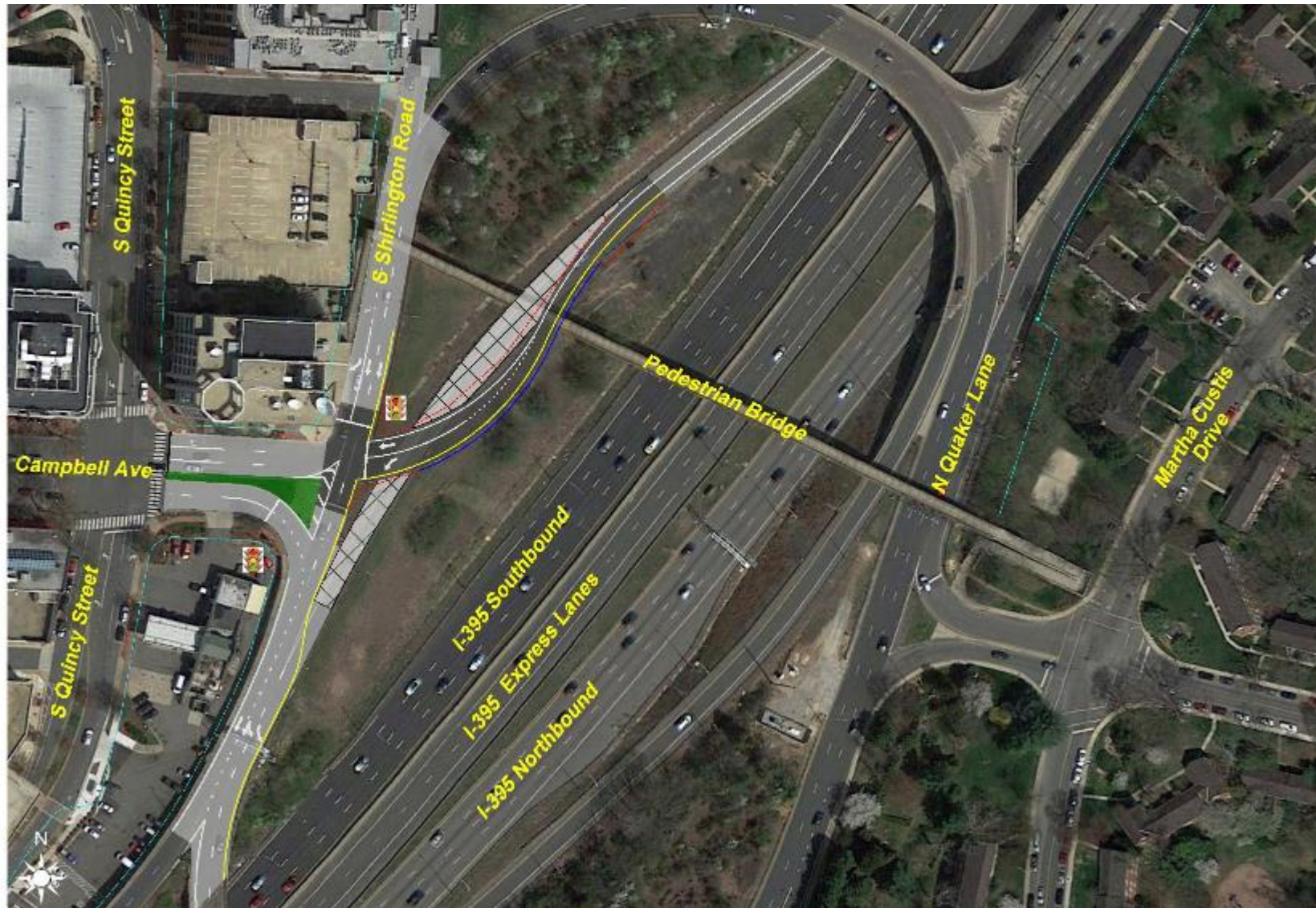
Alternative S-6: Create Signalized Intersection with I-395 SB Off-Ramp & Campbell Ave



Existing Conditions:

- Campbell Ave traffic has short weave area to continue into rotary (area shown in red)
- Queue jumpers
- Some I-395 southbound traffic exits for Quaker Lane but then merges back onto I-395 SB

Alternative S-6: Create Signalized Intersection with I-395 SB Off-Ramp & Campbell Ave



Proposed Alternative:

- Convert I-395 SB off-ramp to an intersection with Campbell Avenue to:
 - Control speeds
 - Remove weaves

Two Example Improvements



The recommended improvements may combine alternatives:

- **Alternative S-5: Create Signalized Intersection with I-395 NB Off-Ramp & Gunston Road**
- **Alternative S-6: Create Signalized Intersection with I-395 SB Off-Ramp & Campbell Avenue**

Schedule & Funding

- **Analysis of Alternatives** Summer/Fall 2018
- **Next Public Information Meeting** Winter 2018/19
- **Summary Report** Spring 2019
- **Budget** \$1.6 Million

Next Steps for the Study

- **Operational Analysis**
- **Detailed Cost Estimates**
- **Summary Report**
- **If funded, this effort could move forward as a Project.**



Questions?

- **Email** meetingcomments@vdot.virginia.gov
 - Please include “I 395 Shirlington Interchange Improvements Study” in the subject line
- **Project Webpage:** http://www.virginiadot.org/projects/northernvirginia/i-395_shirlington.asp
- **If you have any further questions, please contact:**

Olivia Daniszewski,
EIT

Preliminary
Engineering

4975 Alliance Dr
Fairfax, Va 22030

703-259-2318

Questions & Discussion



UPDATES

Proposed Federal Realty project

- Surface parking lot on S Arlington Mill Drive
 - Most likely residential
 - Generate revenue needed to update the Village
 - Additional density requested
- 1. Special General Land Use Plan (GLUP) Study starting...
- 2. Phased Development Site Plan (PDSP) amendment
 - Specific type of development proposed
- 3. Detailed Site Plan and permitting
- 4. Construction & Village update!



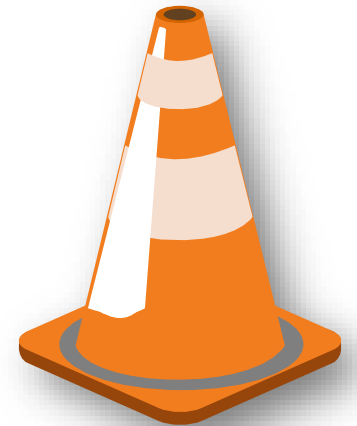
Long Range Planning Committee Meeting (LRPC) - Wed Nov 14th

- Refining the Special GLUP Study **Process**
- Shirlington Special GLUP Study: Background Info on PDSP
 - Potential LRPC visioning meeting to discuss scope & process in Dec

<http://commissions.arlingtonva.us/planning-commission/lrpc/>

Campbell Garage maintenance

- Began August 2018, estimated 9 months to complete (May/June 2019)
- As sections close for repair, parking is temporarily relocated
 - The squeeze is on...
- Other garages available, but Campbell Garage is critical
 - Harris Teeter, Signature, Library, nearby residential buildings
- SCA asked for help with parking shortage – using top floor
 - **Big thank-you** to UDR / Delancey for cooperation!



Pedestrian Safety - S Arlington Mill Dr

- Old developer \$\$ held by County will be used to improve crossings
 - Based on SCA's 2017 Pedestrian Safety Survey
- SCA will vet our needs with County (DES):
 - Christine Ng, Ginny Farris, Damon Banks
- Design & construction Spring 2019



E-Scooters in the Village

- Email your comments to mobility@arlingtonva.us
- 9-month County-wide pilot
 - Limited numbers
 - Pick up/drop off anywhere
 - Collected and charged by individuals for \$\$
- Restrictions:
 - 18 years +
 - Not allowed on sidewalks and trails 😂
 - Drop off – don't block sidewalks or driveways
- Some good news from Federal Realty!



2019 SCA Board Elections

Role	Nominated
President	Edie Wilson
Vice President – Policy	Richard Adler
Vice President – Digital Communications	Masha Sharma
Secretary	Richard Cinquegrana
Treasurer	Bobby Crider
NCAC Representative	Ginny Farris
At-Large	<i>To be recruited by Board</i>
At-Large	<i>To be recruited by Board</i>

Administrative task: simplify initial by-laws , based on our 1st three years

ADDENDUM -- 11/14/2018

The following motion was read and carried unanimously at the 11/13/2018 SCA meeting:

"Motion Regarding the Election of the SCA Board of Directors

Per the Bylaws, Notification of this election and a call for nominations was made at the September 2018 Meeting and following via email to all members and Facebook postings. Solicitation of interest was also made at the beginning of this meeting.

Please it resolved that the Association membership approves the proposed slate of officers [as shown] for the Shirlington Civic Association, to serve from January 1, 2019 to December 31, 2019, with the understanding that (1) the Board will meet to consider possible rotation of officer roles, and (2) the Board will continue to seek two additional at-large volunteer members, and will provide prompt information to the membership about these."

Upcoming Meetings

- January 14
- March 11
- May 13



We meet on the second Monday (usually) of every other month